

**MAXI SHARP** AUTOCLAMP

**Portek**<sup>LTD</sup>  
www.portek.co.uk



Read and fully understand the instructions before operating the Chainmaster MAXI SHARP

**Mains Powered  
Chainsaw Sharpener**

[portek.co.uk](http://portek.co.uk)

**Operators Handbook**

# Before you start

## READ AND UNDERSTAND THIS MANUAL FULLY BEFORE OPERATING THE MAXI SHARP



This user manual accompanies this chainsaw Sharpener and contains important information on setup and handling. Before using the equipment, read the user manual carefully. This particularly applies to the safety notes. Failure to do so may result in personal injury or damage to the equipment.

Store the user manual for further use.

This graphic accompanied by the words **WARNING** and **DANGER** highlights an act or a condition which can lead to **SERIOUS INJURY**.



**ALWAYS WEAR EYE PROTECTION.**

### Residual risks

This machine is only designed for sharpening chainsaws. Before commissioning, the device must be fixed to a workbench or another similar surface. Use the chainsaw sharpener only if you fully understand all the functions and can perform without restrictions or have received appropriate instructions. Respect technical data and safety precautions.

Do not use this product in any other way as stated for normal use. Not observing general regulations in force and instructions from this manual does not make the manufacturer liable for damages.

Please note that our equipment has not been designed for commercial, trade or industrial use. If the equipment is used in commercial, trade or industrial operation or for similar activities, we cannot assume any liability.

Specifications, descriptions and illustrative material in this manual are as accurate as known at the time of publication, but are subject to change without notice. Illustrations may include optional equipment and accessories, and may not include all standard equipment.

Even when the device is used properly and all safety regulations are complied with, there still may be some residual risks.

- Noise emissions
- Dust emissions
- Vibrations to hand and arms
- Danger of burns
- Tool and work piece heat up during operation
- Risk of injury
- Sharp tools and work piece edges

# Important safety information

**ALWAYS WEAR SAFETY CLOTHING IN CONJUNCTION WITH HAND, EYE, HEARING AND FOOT PROTECTION TO HSE/EN SPECIFICATIONS**



## Symbols



Denotes risk of personal injury or damage to the tool.



Read instruction manual before use.



Wear eye protection.



Do not use the appliance in the rain or in wet places.



Danger! Do not touch the grinding wheel.



Children shall not play with the appliance.

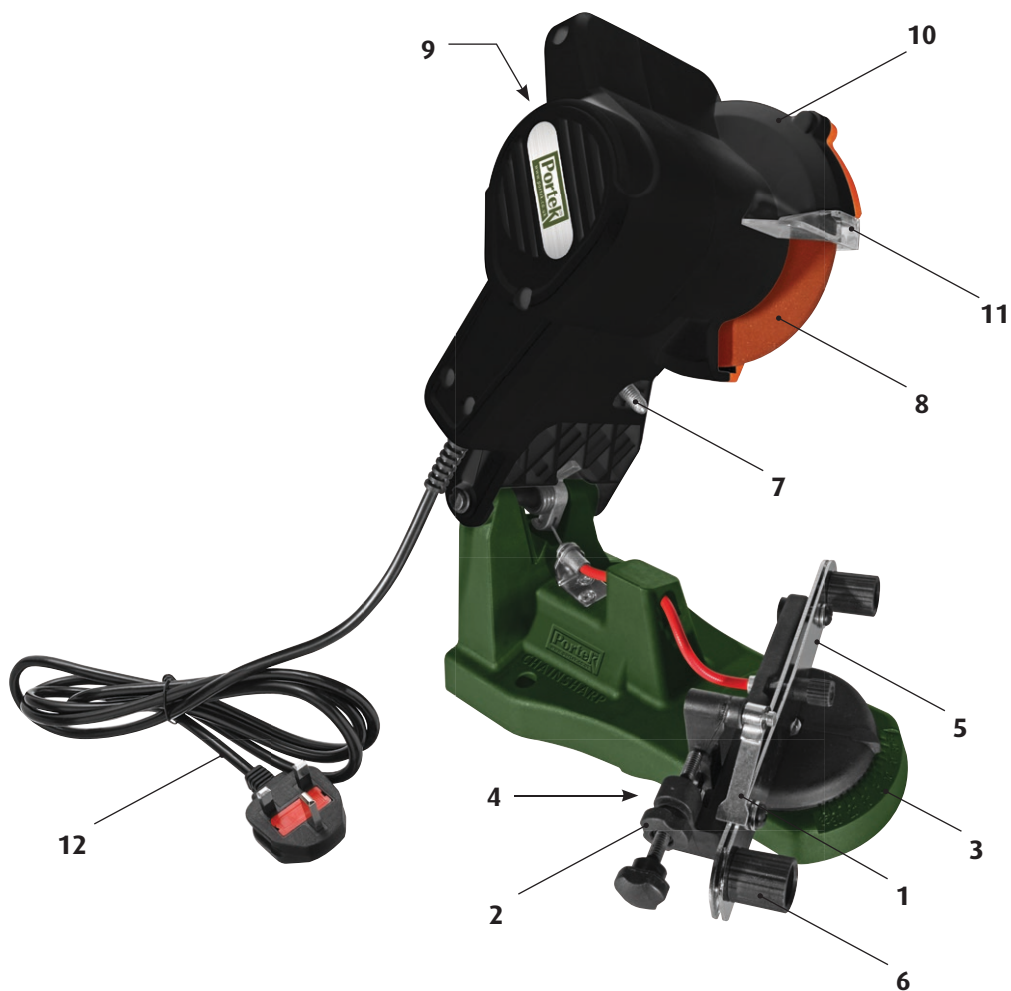


Information of the acoustic power level.



Dispose appliances according to the regulations and requirements of local council.

# Auto-Clamp MAXI SHARP



- |   |                                     |
|---|-------------------------------------|
| 1. Chain stopper                            | 7. Setting screw for limiting depth |
| 2. Chain stopper setting screw              | 8. Grinding wheel                   |
| 3. Scale for setting grinding angle         | 9. On/Off switch                    |
| 4. Locking screw for grinding angle setting | 10. Grinding wheel cover            |
| 5. Chain carrier                            | 11. Grinding wheel shield           |
| 6. Chain setting wheel                      | 12. 230-240V power supply           |

## CONTENTS

Before you start	2
Important safety information	3
MAXI SHARP main features	4
General safety information	6 - 7
Sharpener	8
Assembly	9
Operation	10 - 11
Parts listing	12 - 13
Technical data and disposal	14
Notes	15
Declaration of Conformity	16

# General Safety Information



**Read all safety warnings. Failure to follow the warnings may result in serious injury or even death.**

1. Keep children and bystanders away while operating a power tool. Distractions cause a loss of control.
2. Check for signs of wear or damage, before using the tool and after any impact, and repair as necessary.
3. The tool is designed for use by adults. Young people over 16 years may use the tool under supervision only.
4. The manufacturer is not liable for damage which is caused through inappropriate use or incorrect operation.

## **1. Work area safety**

- Keep work area clean and well lit. Cluttered or dark areas invite accidents.
- Do not operate power tools in explosive atmospheres, such as in the presence of flammable liquids, gases or dust. Power tools create sparks which may ignite the dust or fumes.

## **2. Electrical safety**

- Do not expose power tools to rain or wet conditions. Water entering a power tool will increase the risk of electric shock.
- Do not abuse the power cord. Keep cord away from heat, oil, sharp edges or moving parts. Damaged or entangled cords increase the risk of electric shock.



### 3. Personal Safety

- Stay alert, watch what you are doing and use common sense when operating a power tool. Do not use a power tool while you are tired or under the influence of drugs, alcohol or medication. A moment of inattention while operating power tools may result in serious personal injury.



**WARNING! Wear ear protectors. Exposure to noise can cause hearing loss.**

**WARNING! Use protective equipment. Always wear safety glasses when working with the machine.**

- The use of protective clothing is recommended, such as dust mask, protective gloves, sturdy non-slip footwear, helmet and ear defenders. Wear a hairnet if you have long hair. It is recommended to wear gloves, sturdy non slipping shoes and apron.
- Prevent unintentional starting. Ensure the switch is in the off position before plugging in the machine.
- Never reach into the danger area of the machine when it is running. Chips and splinters must not be removed while the machine is running.



- **WARNING! Always allow the grinding wheel to come to a stop.**

### 4. Service

- Have your power tool serviced by a qualified repair person using only identical replacement parts. This will ensure that the safety of the power tool is maintained.

# Sharpener Unit Safety



## Safety Warnings for MAXI SHARP

- Do not force the power tool. Use the correct power tool for your application. The correct power tool will do the job better and safer at the rate for which it was designed.

**Do not use the power tool if the switch does not turn it on and off. Any power tool that cannot be controlled with the switch is dangerous and must be repaired.**

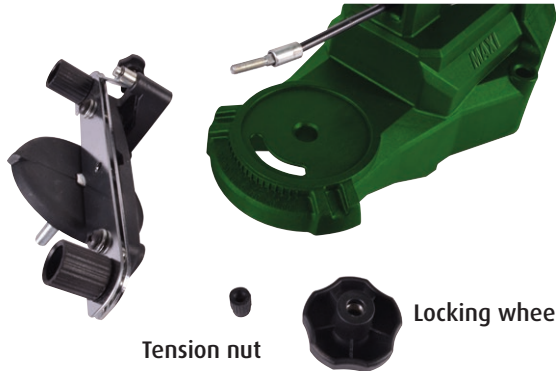
- Disconnect the plug from the power source from the power tool before making any adjustments, changing accessories, or storing power tools. Such preventive safety measures reduce the risk of starting the power tool accidentally.
- **WARNING!** The adjusting nut must be tightened before starting to work with the machine.
- Maintain power tools. Check for misalignment or binding of moving parts, breakage of parts and any other condition that may affect the power tool's operation. If damaged, have the power tool repaired before use. Many accidents are caused by poorly maintained power tools.
- **WARNING!** Always use the protective shields on the machine. Do not remove the transparent front guard. If the transparent front guard is damaged or missing, return tool to authorized service station for replacement.
- Do not use a damaged grinding wheel. Before each use inspect the wheel for chips and cracks or excess wear. The grinding wheel must be properly mounted and turn freely. Perform a test run for at least 30 seconds without load. Do not use damaged, out of round or vibrating grinding wheels.
- Immediately switch off the machine in case of considerable vibrations or if other malfunctions occur. Check the machine in order to find out the cause.
- The outside diameter and the thickness of your accessory must be within the capacity rating of your power tool.



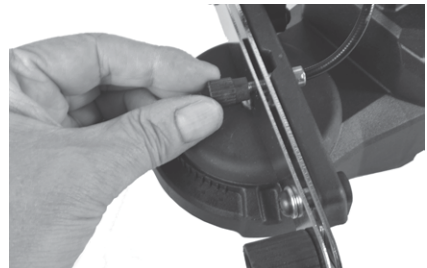
**The MAXI SHARP is supplied partly assembled, please assemble the machine as follows:**

1. Remove the large locking wheel from the chain guide assembly and place the bolt end through the hole in the unit base. Replace the locking wheel on to the bolt and adjust to the required angle before fully tightening. When installing the MAXI SHARP on to a work bench, make sure that the locking screw is easily accessible.

**Chain clamp assembly**



2. Remove the plastic tension nut from the end of the tension cable. Pull the cable through the chain guide clamping piece and replace the plastic tension nut.

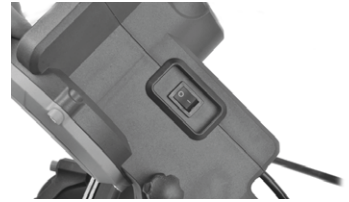


### **Work Surface Mounting**

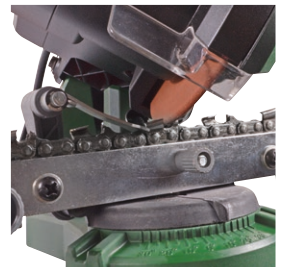
3. Place the unit base on to a solid, level work surface. Ensure the base extends out far enough over the edge so that the chain can hang freely and you have easy access to the vice angle adjustment screw underneath. Mount the base to the work surface through the two 9mm (1/4") mounting holes (bolts not included).
4. The MAXI SHARP is assembled and ready for use. The pre-installed grinding wheel is for universal use. To replace a grinding wheel see "Grinding Wheel Replacement" section.

# Operation

1. Clean the chain before sharpening. Inspect the chain for the most worn-out cutter tooth and start sharpening with this tooth. The most worn-out tooth is important in order to sharpen all other teeth to the same depth!
2. Lift up the chain stop, position the chain and secure the chain between the clamping piece of the chain guide assembly. Fold down the chain stop and pull back the first cutter tooth against the chain stop. Make sure the chain is between both guide boards so that the chain can not tilt to the side.
3. Check the necessary filing angle according to the specifications for the chain. Adjust the filing angle on the chain guide assembly to  $25^{\circ}$  -  $30^{\circ}$  or to the required angle and tighten the locking screw.
4. Lower the motor housing so that the grinding wheel skims the chain tooth. Hold it in this position while you tighten the screw so that the grinding wheel will only go down to that point, fix this position with the locking screw.
5. Switch 'ON' the MAXI SHARP by pressing firmly. Use the handle to bring the grinding wheel down towards the chain tooth. As you bring down the motor housing the tension cable will automatically clamp the chain between the metal chain boards.
6. After sharpening one tooth, turn off the machine. Lift the motor housing, to release the clamp boards, and move the chain so that the next link is positioned against the chain stop. Mark the first cutter tooth with chalk, then sharpen every second tooth in one direction. Repeat this process until you have sharpened all of the links set up for this angle.
7. Change the cutting angle to  $30^{\circ}$  or to the required angle of the opposite direction of the remaining chain cutter teeth.



**ON/OFF switch**



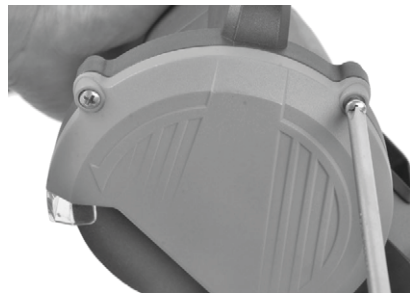
To avoid malfunction, damage or injury always use a suitable grinding wheel that is in good condition. Do not use a grinding wheel that is chipped, cracked, or worn. You can check if the wheel has cracks not visible to the human eye by hanging it up by the central hole and tapping it with a non-metal object (i.e: screwdriver handle). If it is in good condition it will produce a metallic sound. A dull sound indicates a crack or break.

## Replacement Portek Grinding Wheels are available:

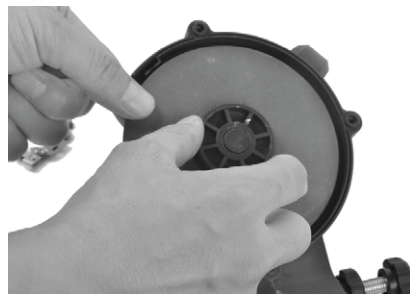
4.5mm thick wheel part number 092/01 and 3.2mm thick wheel part number 092/02

## Changing the Grinding Wheel

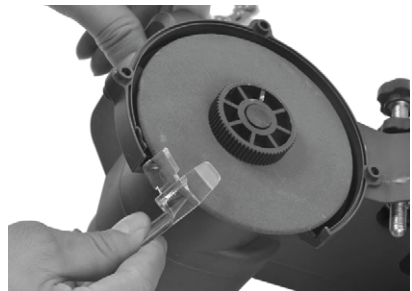
1. Switch off the machine and unplug power supply.
2. Remove the grinding wheel protective cover by unscrewing the 3 retaining screws.
3. Hold the grinding wheel firmly with one hand and loosen the locking nut.
4. Remove the old grinding wheel and replace with a new one. Tighten the fixing nut but do not over tighten - over tightening may cause the wheel to crack or break. Only use grinding wheels with an outer diameter of 108mm and inner diameter of 23mm. The grinding speed of replacement grinding wheel must meet or exceed the RPM rating of the machine.
5. Remount the grinding wheel protective cover onto the machine. Never operate the MAXI SHARP without the grinding wheel cover in place. Keep away from the wheel when it is turning, and make sure no one is standing close, in the line of the wheel rotation trajectory. If the grinding wheel vibrates on start up, turn off the machine immediately and check that the grinding wheel is mounted securely!
6. Never try to stop the grinding wheel with your hands, even if you are wearing safety gloves. The grinding wheel will cut through gloves and your hand, causing serious injury. Replace the grinding wheel when it grinds down to a diameter of 95mm.



Remove cover



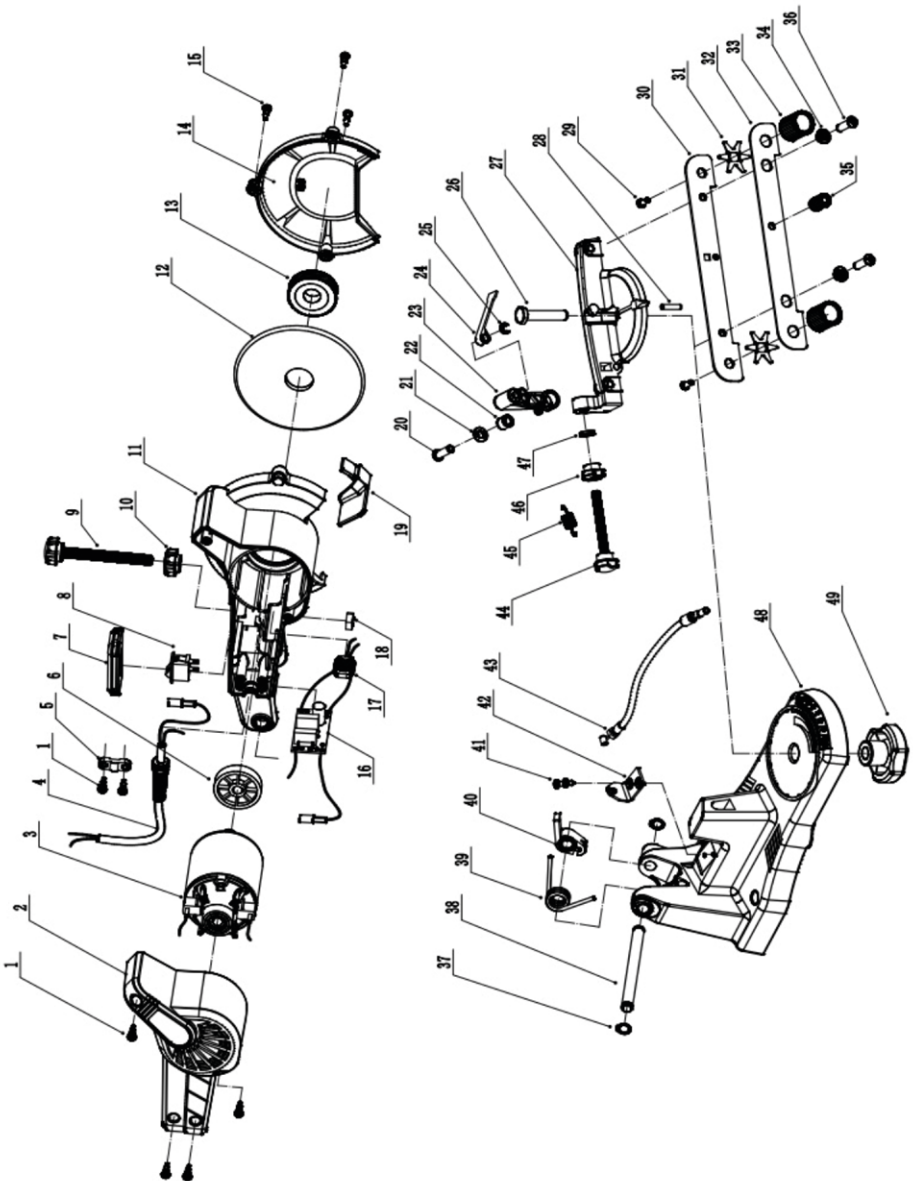
Release wheel by loosening locking nut



Replace with new wheel and ensure protective shield is in place

# Parts List

NO.	DESCRIPTION	QTY	NO.	DESCRIPTION	QTY
1	4.2x14 Cross Pan Head Self Tapping Screw	6	26	M8x45 Hexagon Headed Bolt	1
2	Back Cover	1	27	Fixing Frame	1
3	Electric Machinery	1	28	ø3.2x16 Elastic Pin	1
4	Power Cord	1	29	4.8x10 Cross Pan Head Self Tapping Screw with Gasket	2
5	Wire Pressing Plate	1	30	After Clamping Piece	1
6	Grinding Wheel Base	1	31	Star Wheel	2
7	Switch Plate	1	32	Front Clamping Piece	1
8	Switch	1	33	Drive Rod	2
9	M8 Bolt	1	34	Top Pad	2
10	M8 Nut	1	35	M5 Nut	1
11	Top Housing	1	36	5.5x20 Cross Pan Head Self Tapping Screw	2
12	Grinding Wheel	1	37	ø9 Shaft Circlip	2
13	Grinder Lock Cap	1	38	Pin Shaft	1
14	Grinding Wheel Cover	1	39	Torsion Spring	1
15	4.2x12 Cross Pan Head Self Tapping Screw	3	40	Pull Rod	1
16	Circuit Board	1	41	4.2x14 Cross Countersunk Head Self Tapping Screw	2
17	Inductance	1	42	Baffle	1
18	M8 Nut	1	43	Short Stay Wire	1
19	Transparent Protective Cover	1	44	M6 Quincunx Bolt	1
20	5.5x22 Cross Pan Head Self Tapping Screw	1	45	Drag Spring	1
21	ø6 Flat Pad	1	46	M6 Quincunx Nut	1
22	Steel Sleeve	1	47	ø6 Cushion	1
23	7 Chevron	1	48	Base	1
24	Ejector Pin	1	49	Lock Wheel	1
25	4 Circlip	1			



## Technical data

Voltage	220-240V
Input power	85W
Frequency	50Hz
No-load speed	5,800 min <sup>-1</sup>
Cutting angles	35° left to right
Grinding disk outer diameter	108 mm
Grinding disk inner diameter	23 mm
Grinding disk thickness (standard)	3.2 mm
Grinding disk thickness (optional)	4.5 mm
Sound pressure level L <sub>pA</sub>	54.1 dB (A)
Sound power level L <sub>WA</sub>	67.1 dB (A)
Uncertainty	K = 3 dB (A)

The sound levels have been determined in accordance with noise measuring process.



### Main Unit

Do not dispose of electrical appliances as unsorted municipal waste, use separate collection facilities. Contact your local government for information regarding the collection systems available. If electrical appliances are disposed of in landfills or dumps, hazardous substances can leak into the groundwater and get into the food chain, damaging your health and well-being.



# Declaration of Conformity

## Declaration of Conformity

Portek Ltd, Bryn Hall, Knolton Bryn, Overton on Dee, Wrexham, LL13 0LF declare that the machinery named below conforms to the requirements of EC Council Machinery Directive, Annex II

Designation of Machinery: Portek MAXI SHARP Chainsaw Sharpener

Relevant EC Council Directives:

2006/42/EC (Machinery Directive)

2014/30/EU (Electromagnetic Compatibility Directive)

Applied Harmonised Standards:

BS EN ISO 12100:2010

BS EN 62841-3-4:2016

The unit complies with all applicable Essential Requirements of the Directives.

Signature of Manufacturer's Representative:



Declaration made by Hugh David  
Director on 02/07/2021.



Portek Ltd.  
Bryn Hall, Knolton Bryn  
Overton-on-Dee  
Wrexham, LL13 0LF  
Tel: 01234 889 454  
Fax: 01234 889 464

**General enquiries**

Email: [info@portek.co.uk](mailto:info@portek.co.uk)